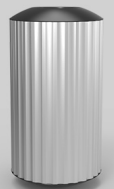
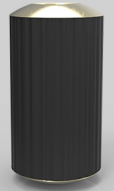


# Taylor Bin 80L



## Specifications

**DIMENSIONS\***  
 Ø:520mm H:1005mm

**CLADDING**  
 Powder coated steel,

or Brushed 304 grade stainless steel,

or Powder coated extruded aluminium,

or Clear anodized extruded aluminium,

or Select grade hardwood or timber composite.

**CHUTE/TRIM**  
 Powder coated steel,

or Brushed 304 grade stainless steel,

or Polished brass.

**FRAME**  
 Powder coated aluminium frame,  
 with Galvanized steel base plate.

\*Dimensions may vary slightly  
 depending on specified options.

